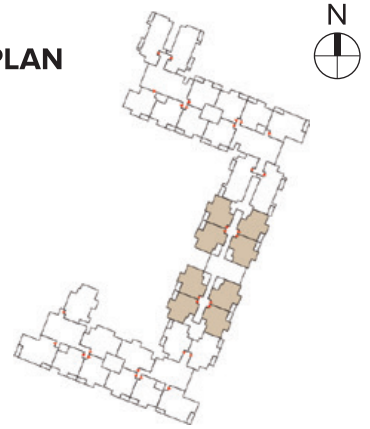


TYPICAL UNIT PLAN

2-Bedroom Unit - Type A1

2 Bedrooms + 2 Toilets

KEY PLAN



SUPER BUILT-UP AREA

1230 Sq.ft. / 114.27 Sq.m.

CARPET AREA

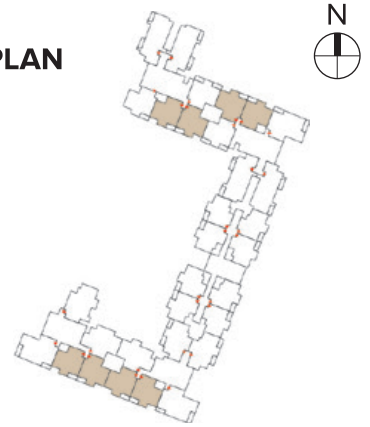
860 Sq.ft. / 79.87 Sq.m.

The information depicted herein viz., master plans, floor plans, furniture layout, fittings, illustrations, specifications, designs, dimensions, rendered views, colours, amenities and facilities etc., are subject to change without notifications as may be required by the relevant authorities or the developer's architect, and cannot form part of an offer or contract. Whilst every care is taken in providing this information, the Developer cannot be held liable for variations. All illustrations and pictures are artist's impression only. The information are subject to variations, additions, deletions, substitutions and modifications as may be recommended by the company's architect and/or the relevant approving authorities. The Developer is wholly exempt from any liability on account of any claim in this regard. (1 square metre = 10.764 square feet). E & OE.

TYPICAL UNIT PLAN

2-Bedroom Unit - Type A
2 Bedrooms + 2 Toilets

KEY PLAN



SUPER BUILT-UP AREA

1290 Sq.ft. / 119.85 Sq.m.

CARPET AREA

923 Sq.ft. / 85.73 Sq.m.

The information depicted herein viz., master plans, floor plans, furniture layout, fittings, illustrations, specifications, designs, dimensions, rendered views, colours, amenities and facilities etc., are subject to change without notifications as may be required by the relevant authorities or the developer's architect, and cannot form part of an offer or contract. Whilst every care is taken in providing this information, the Developer cannot be held liable for variations. All illustrations and pictures are artist's impression only. The information are subject to variations, additions, deletions, substitutions and modifications as may be recommended by the company's architect and/or the relevant approving authorities. The Developer is wholly exempt from any liability on account of any claim in this regard. (1 square metre = 10.764 square feet). E & OE.